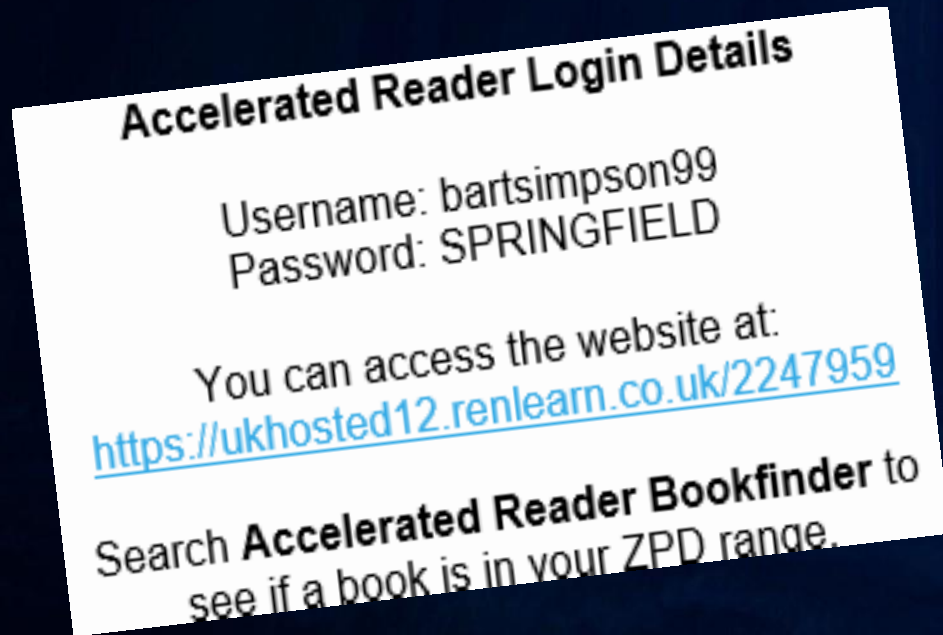


Accelerated Reader

What is it and why
do I need to know?



AR is a computer program that you will be using at home and at school.
You'll be given your own login details (username and password) to help you do this.



KS2 pupils – glue these into Reading Journals.

KS3 pupils – store them safely.

Let your English teacher know if you lose your login details!

At the beginning of each term, you will take a short online assessment at school. It will identify your ZPD range.

Remember that everyone is different!

Your ZPD range might be higher or lower than someone else in your year group – that's ok.



At the beginning of each term, you will take a short online assessment at school. It will identify your reading age and your Zone of Proximal Development or ZPD range.

Your ZPD range will help you choose books that are right for you. They offer you challenge without being too difficult.

A book from your ZPD range will be like this:

**Too
difficult**

**Too
simple**

**Just
right**



Your teacher will only share your ZPD with you and with your parents. They'll never share it with anyone else in your class.

You don't have to tell anyone else if you don't want to – your choice.



Every ZPD matches a colour.
This makes books easy to find in our library!



ZPD RANGE!

1.0-1.9 WHITE

2.0-2.9 BLUE

3.0-3.5 GREEN

3.5-4.0 YELLOW

4.1-4.5 PINK

4.6 – 5.0 ORANGE

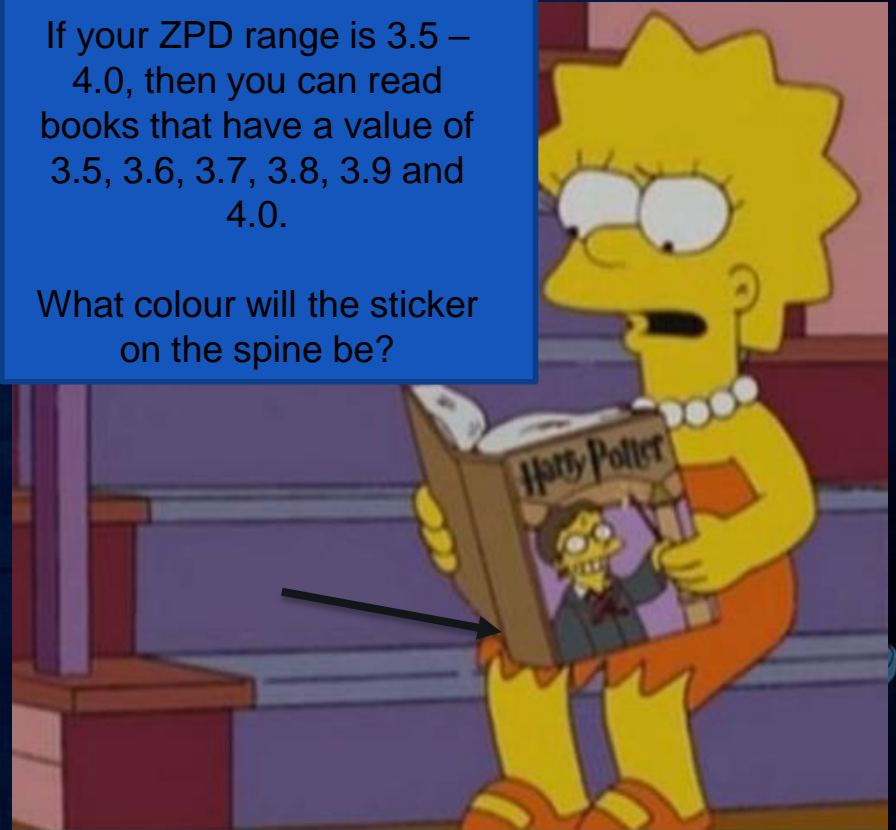
5.1-6.0 RED

6.1 – 7.9 PURPLE

8.0 – 10.0 GOLD

If your ZPD range is 3.5 – 4.0, then you can read books that have a value of 3.5, 3.6, 3.7, 3.8, 3.9 and 4.0.

What colour will the sticker on the spine be?



Once you know your ZPD, you can start using the library from 12.55 pm to 1.20 pm daily and during afternoon form time (your tutor will tell you when).



Part of our library is suitable for all pupils!



Part is for KS3 only!

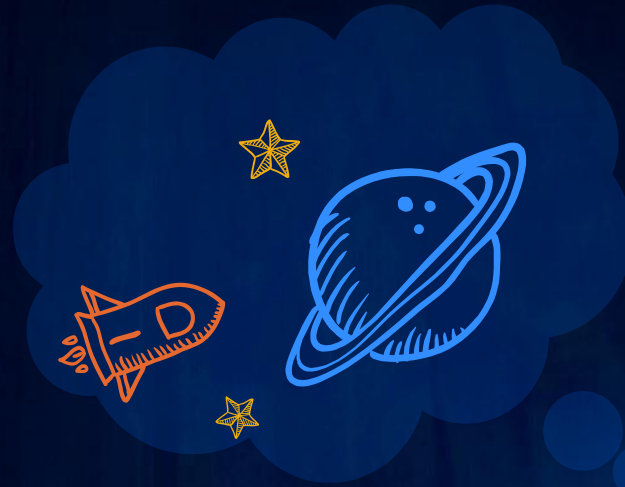


Choose a book in
your ZPD range and
bring it to class and
to form time.

Read it during the
school day and at
home.



When you finish a book, take an AR quiz. The more you read, the more quizzes you can take and the more positive points you earn!



You can quiz at home or school
(English teachers will show
you how this works) but...

NEVER LOOK IN THE
BOOK WHEN YOU
QUIZ!



What if I want to read a
book that isn't in my
ZPD range?

You can!

You can have up to two
reading books at a time,
just make sure one is at
the right ZPD.





Librarian

[Quick Search](#) [Advanced Search](#) [Collections](#)



Enter Keycode

Go

You do not need a Keycode

Search

Search Results

Titles 1 - 20 of 237

« Previous Page 1 of 12 Next » Go to Page



Charlotte's Web

White, E.B.

AR Quiz No. 20000 **EN Fiction**

IL: **MY - BL: 4.4** - AR Pts: **5.0**

AR Quiz Types: **RP, LS, VP**

Rating: ★★★★★

In this endearing story, a little girl and Charlotte, a beautiful grey spider, struggle to save Wilbur the pig from being butchered.

+ Add to AR BookBag™

How do I know what the ZPD is if the book isn't from the school library?

ZPD RANGE!

1.0-1.9 WHITE

2.0-2.9 BLUE

3.0-3.5 GREEN

3.5-4.0 YELLOW


4.1-4.5 PINK

4.6 – 5.0 ORANGE

5.1-6.0 RED

6.1 – 7.9 PURPLE

8.0 – 10.0 GOLD



**You'll be reading in afternoon
form time and for homework.
Make sure you have a book you
love!**



Happy Reading!



and they all lived

happily ever after...

